

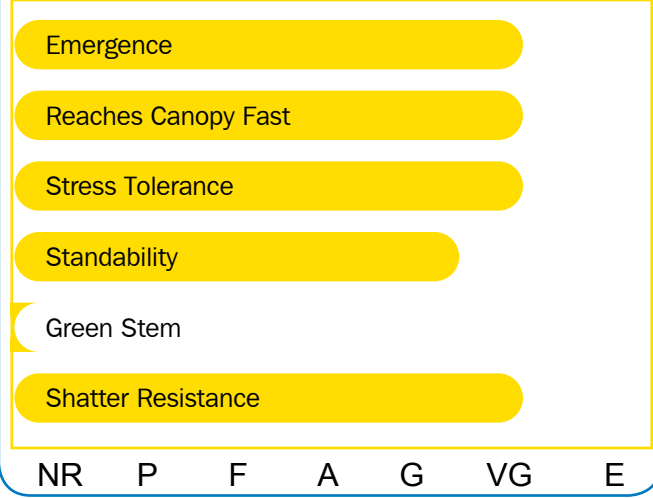
AV 67A7RR

NEW
6.7 RM

- New Mid Group VI tawny determinate
- Moderate resistance to Root Knot Nematode
- Resistant to both Stem Canker and Soybean Mosaic Virus
- Excellent 2008 testing performance in East Coast states



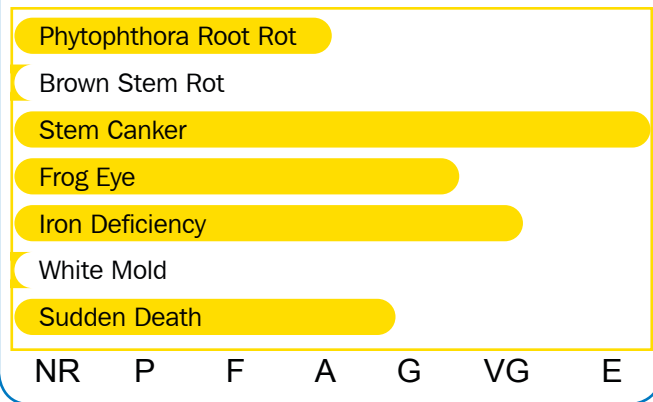
Agronomics



Characteristics

Plant Height	Medium
Plant Width	Medium
Flower	Purple
Hilum	Imp Black
Pubescence	Tawny
Pod	Tan
Seed Size	Larger

Disease Resistance



Management Recommendations

Irrigation	***
No Till	***
Wide Rows	***
Narrow Rows	****
Higher Populations	***
Lower Populations	****
High Organic	***
Clay and Variable	****
Light and Sandy Soils	***

Notes



**** = excellent, *** = very good, ** = good, * = fair