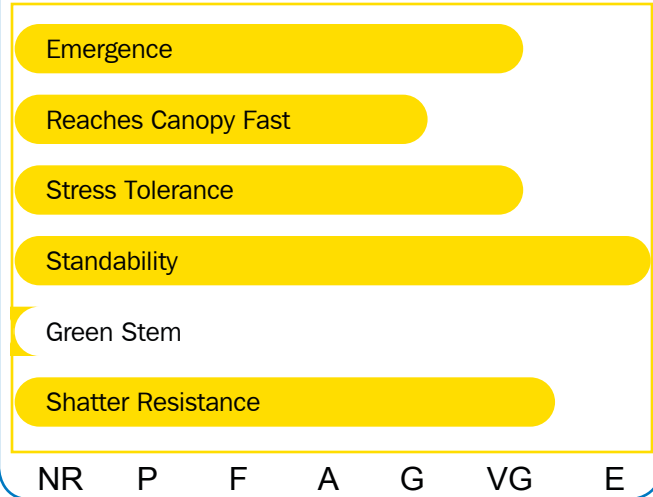


- Stem Canker resistant
- Very good tolerance to Frogeye and Sudden Death
- Lead product in Mid to Late group V
- Tawny determinate adapted from Delta to East Coast



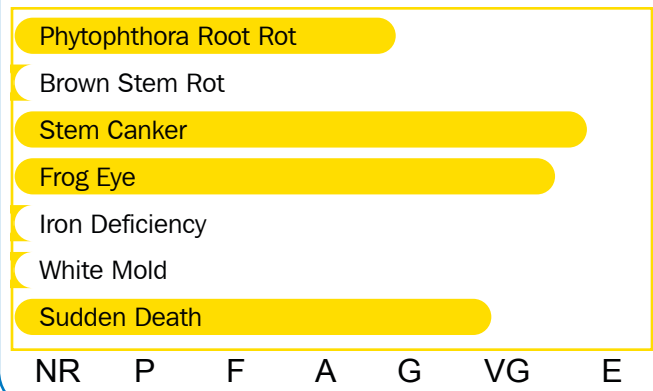
### Agronomics



### Characteristics

Plant Height	Medium
Plant Width	Medium Bush
Flower	Purple
Hilum	Black
Pubescence	Tawny
Pod	Tan
Seed Size	Medium

### Disease Resistance



### Management Recommendations

Irrigation	****
No Till	****
Wide Rows	***
Narrow Rows	****
Higher Populations	****
Lower Populations	**
High Organic	****
Clay and Variable	****
Light and Sandy Soils	**

### Notes

---



---



---



---



\*\*\*\* = excellent, \*\*\* = very good, \*\* = good, \* = fair