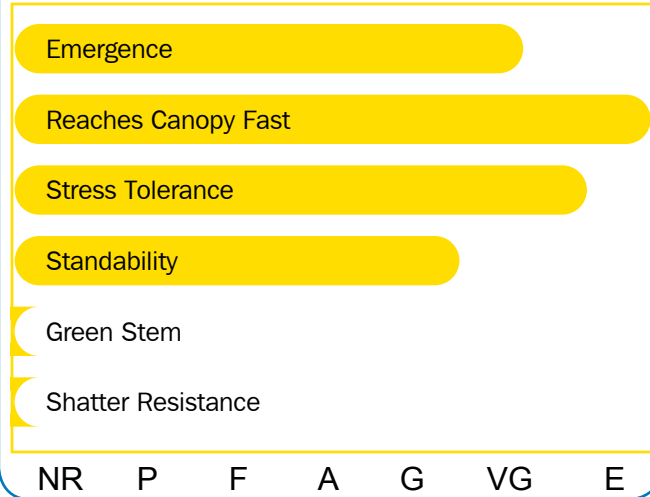


- Big tough indeterminate for southern clay or the East Coast
- "C" gene for PRR
- Very good tolerance to Frogeye and Stem Canker
- Chloride excluder with R3 SCN resistance

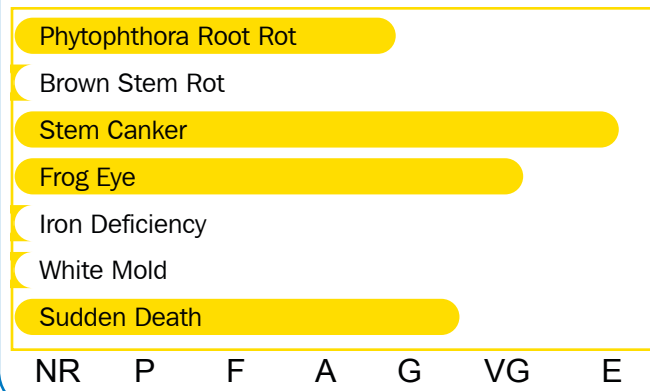
Agronomics



Characteristics

Plant Height	Tall
Plant Width	Medium
Flower	Purple
Hilum	Black
Pubescence	Tawny
Pod	Brown
Seed Size	Larger

Disease Resistance



Management Recommendations

Irrigation	***
No Till	****
Wide Rows	****
Narrow Rows	**
Higher Populations	NR
Lower Populations	****
High Organic	**
Clay and Variable	****
Light and Sandy Soils	****

Notes



**** = excellent, *** = very good, ** = good, * = fair